

Easy, it's Mocom

Sterilization first



Introducing Futura



Our vision

Quality and technological innovation

For over twenty-five years safety, reliability and forward thinking have been the guiding principles behind all aspects of design and production at Mocom, the world's leading sterilization firm. The factors that set us apart, in terms of both skill and innovation, are conscientious attention to the choice of materials, ground-breaking technology, enforcement of strict production/quality control protocols and the wealth of experience accumulated by our qualified, specialised sterilization system designers.

Mocom, sterilization first.



Futura

Upgrading the best



Upgrading the best

- **Use of tap water**

Thanks to its integrated demineralizing filter, Futura can operate using tap water and a stand-alone machine

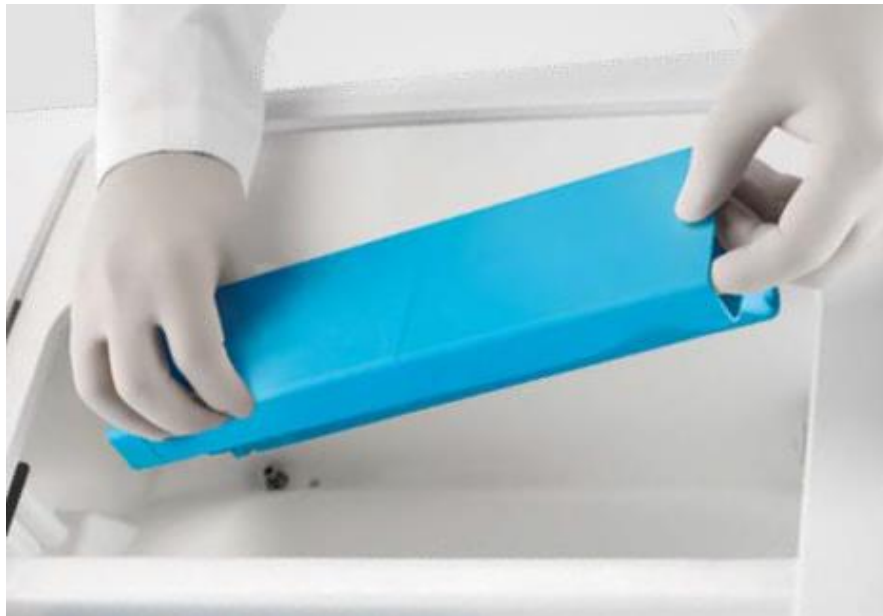
- **Absolute connectivity**

At the end of each sterilization cycle, the machine stores a report inside its memory. The user can download the cycles in PDF format at any time through the front USB port or automatically store them in the cloud using the WiFi and Di.V.A. system.

- **Functions**

Characteristics and functions of a first-class machine. Delayed start, extra drying, custom cycle and operator identification





How does it work

Internal filter

Unlike traditional sterilizers, Futura does not require any external water connection for mains water treatment. Thanks to the demineralisation filter on the main tank, the user can fill the latter with plain tap water, thereby significantly optimising spaces, streamlining processes and achieving considerable savings. Futura's different filtration systems guarantee unprecedented ease of operation. Facile da mantenere, il filtro non richiede la presenza di un tecnico per la sostituzione.

Water conductivity sensor:

The in-tank sensor checks water quality to ensure a correct and long-lasting machine operation



Efficiency and saving

Some of its incredible advantages:

The incorporated system makes it possible to increase the surgery efficiency, eliminating demineralized water management issues. Recipients' storage and deterioration of machine internal components caused by poor water quality will be a thing of the past. Never before has a sterilizer provided such high performance and low usage costs. Since water is demineralized by Futura's filter, the user does not need to source demineralized water: they will only have to fill up the machine tank with tap water.



Wifi & Ethernet

Total connectivity:

All the machines in the Futura range are designed with integrated Wi-Fi and a rear Ethernet port for connecting the autoclave to the studio network and the Internet. In an increasingly digital world, Futura lets you stay connected.



Cycle report

PDF and internal memory

After each sterilisation cycle, the machine saves the report in its memory (large enough to contain 10,000 cycles). The user can download the cycles in PDF format at any time via the USB port on the front of the unit and save them in a PC.

DATAster



DataSter

Automatic download program:

Supplied as standard with the machine, DataSter is used to perform the automatic download of cycle reports directly to a network or PC folder. At the end of each cycle, the sterilizer sends the PDF file to the selected folder. Simple to install and configure, DataSter automatically saves cycle reports to a PC or network folder.



Printers

The Futura range can be completed with a printer available as optional accessories:

Standard printer:

An external printer that generates reports or bar code labels.



EasyCheck

Remote technical support:

All sterilizers of the Futura range are equipped with incorporated WiFi and Ethernet port.

Connected to the Internet by enabling the Easy Check service, they can receive remote support. Intervention times can be significantly reduced thereby allowing technicians to keep machines constantly efficient.

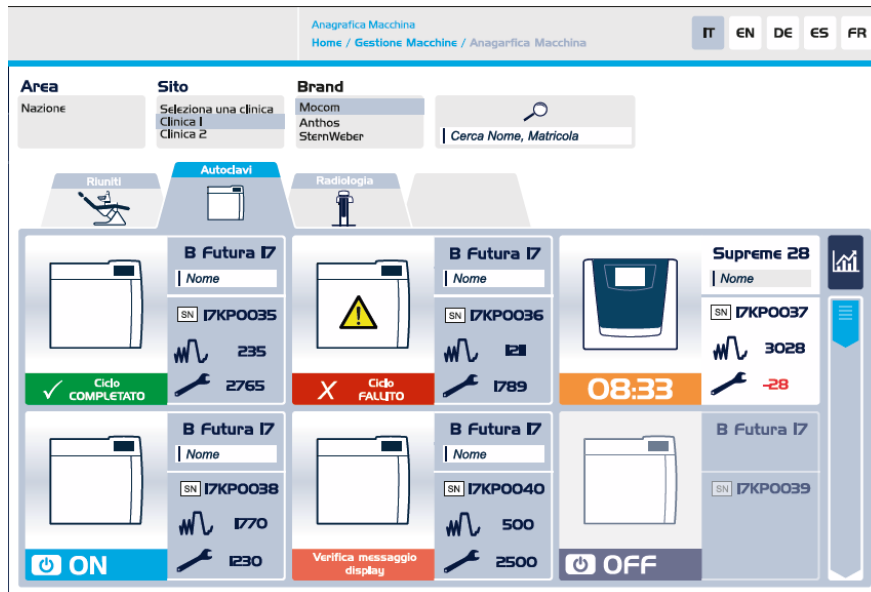
Di.V.A.

Cloud:

Di.V.A. stands for Digital Virtual Assistant. It is the first cloud-based control and traceability system for MOCOM sterilization devices. Once saved, data will be available for operators by accessing a dedicated web page.

Di.V.A. allows you to:

- Get access to tutorial videos
- Display the executed cycles
- Check machine efficiency and status
- Read the machine usage statistics
- Monitor the frequency of sterilization tests





MyTrace

Traceability software:

MyTrace is Cefla's traceability software supplied with Futura. By using this program, each set of sterilized instruments can be associated to the patient through a bar code. This essential software completes the sterilization process and provides legal protection to dentists.



Display 4,3'' touch

Ease of use

The B Futura sterilizer is a smart and essential working tool that ensures excellent performance also thanks to the colour LCD touch screen and user-friendly interface.

Each control corresponds to icons that ensure an immediate reading of the machine status.



Cycle customisation

Delayed start

Thanks to the delayed start option it is possible to postpone the start of the machine cycles, thereby optimising its usage.

Extra drying

This function is used to set customised drying times for demanding loads.

Custom cycle

Cycle parameters can be set to meet specific user needs (in complete safety) by choosing from among a wide range of standard-compliant values.



User ID

PIN

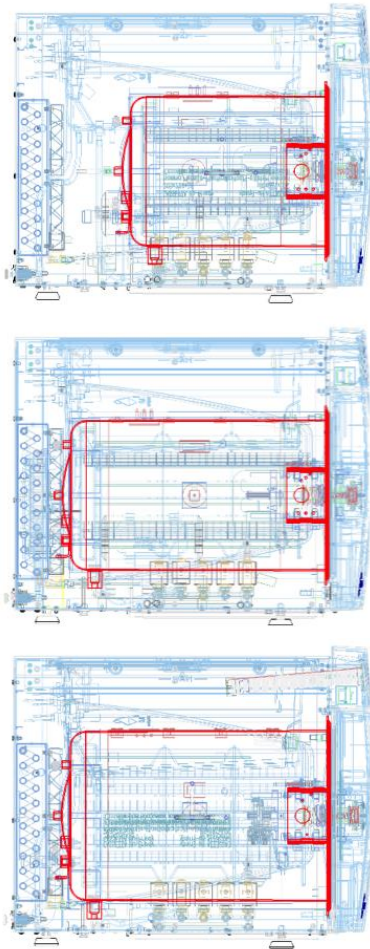
Authorises personnel in charge to get access to the sterilizer. By entering a security code (PIN number), operators can keep track of the usage history of the machine while ensuring process control.



Test reminder

Pop Up

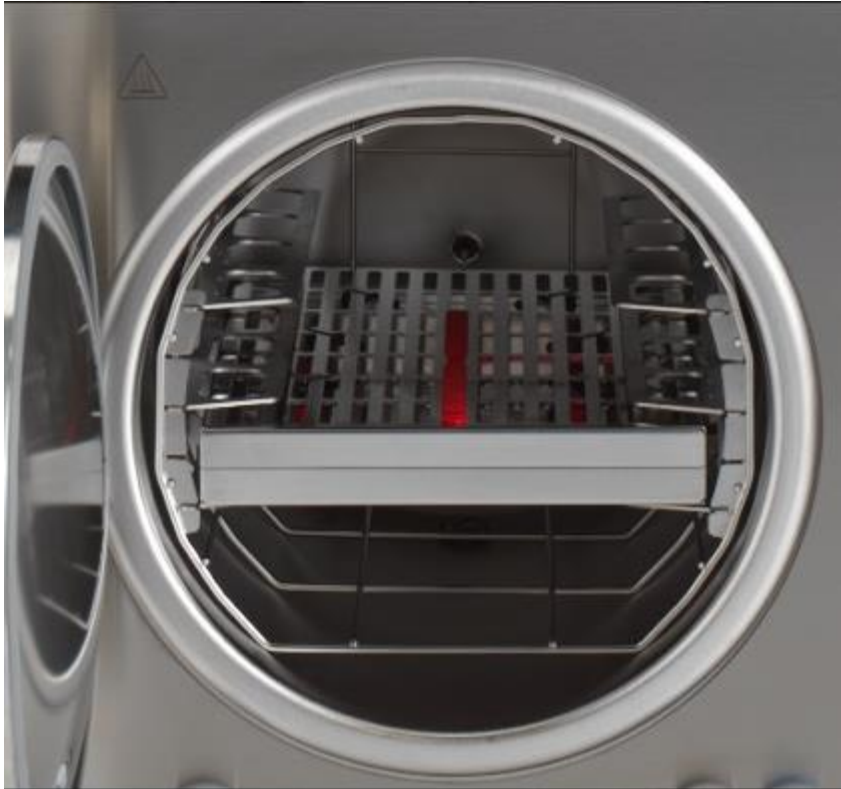
By setting this function on the display, Futura will inform the user when a Vacuum Test, Helix Test or Bowie & Dick test must be carried out. Therefore, it will become impossible to forget about these important operations.

THREE VOLUMES WITHIN
THE SAME DIMENSIONS

Three volumes within the same dimensions

485 x 600 x 495 mm:

The Futura range is available in three volumes, 17, 22 e 28 liters. Three different capacities allow users to choose the most suitable machine according to their needs. External dimensions, being the same for the three machines, make installation easier. The 17 and 22 liters models have five trays while the 28-litre model has six.



Accessories

Modular tray holder:

Modular housing system for filling the sterilizer. Provided with 3 pairs of shelves, it allows for the full use of the chamber diameter and the introduction of even cumbersome loads.

Bar code reader:

The bar code reader, usable on the most common PCs, makes it possible to complete the traceability process and associate bar code labels to patients.

Water filling kit

Front filling kit:

Allows the operator to fill the main tank frontally through a quick coupling.

Automatic filling kit:

Consists of an external pump powered by the sterilizer and allows water to be withdrawn from an external tank to fill the main tank.

SV aux kit:

This kit allows the sterilizer to be interfaced with the surgery water supply system so the sterilizer only draws water from the system as and when necessary.



Technical data

Technical data	Futura 17	Futura 22	Futura 28
Power supply voltage	220/240 V 50Hz 220/230 V 60HZ 120V 60HZ		
Rated power	2300 W 1440W (120 V - 60Hz)		
External dimensions WxHxD	480 x 500 x 600 mm		
Chamber dimensions (Diam. x Depth)	250 x 350 mm	250 x 450 mm	280 x 450 mm
Total weight	51 kg	52 kg	53 kg
Tank capacity	4,5l		
Autonomy	From 7 to 11 cycles	From 6 to 10 cycles	From 5 to 9 cycles
Duration of filters (water in 600 µS/cm)	120 liters		



Sterilization Cycle

Cycle	Cycle type	Sterilization time	Futura 17	Futura 22	Futura 28	Drying*
134°C Universal	B	4	27	29	37	13-17
121°C Universal	B	20	43	46	50	13-17
134°C Prion	B	18	41	43	51	13-17
134°C Wrapped solid instruments	S	4	18	22	26	13-17
134°C Unwrapped hollow instruments	S	4	29	32	36	4-6
Custom cycle	S	Cycle can be personalised by user at temperatures 134 °C / 121 °C, process times starting from 4' (134 °C) or 20' (121 °C) with adjustable drying				
Vacuum Test	Test		18	18	19	
Helix/B&D Test	Test		20	24	28	
Vacuum + Helix/B&D Test	Test		42	46	54	

* Drying varies according to machine model and volume

Note: times do not take the max. pre-heating time into account.

Note: times may vary depending on the load and power supply.

Note: 120 V model times may undergo increments up to a max. of 20%.

